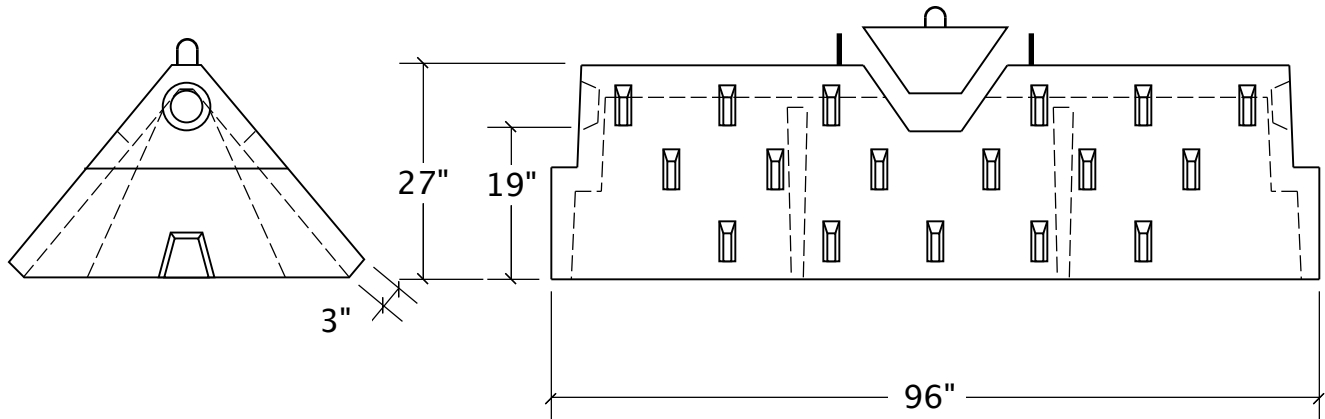
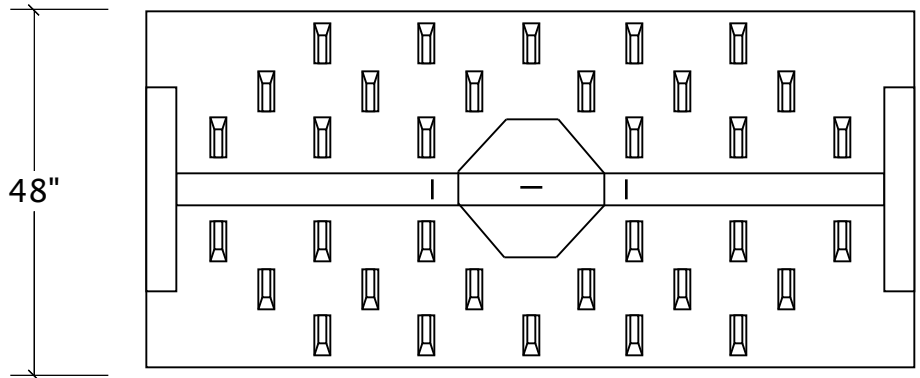


TRU-VAP™ "TP" LEACHING CHAMBERS



NOTES:

- * Concrete: 5000psi min
- * Fiber reinforcement throughout
- * ASTM C 1227
- * H-20 available
- * 4" pipe Trench knockouts
- * Inspection Risers available
- * Four foot Half Sections and Risers available- see below



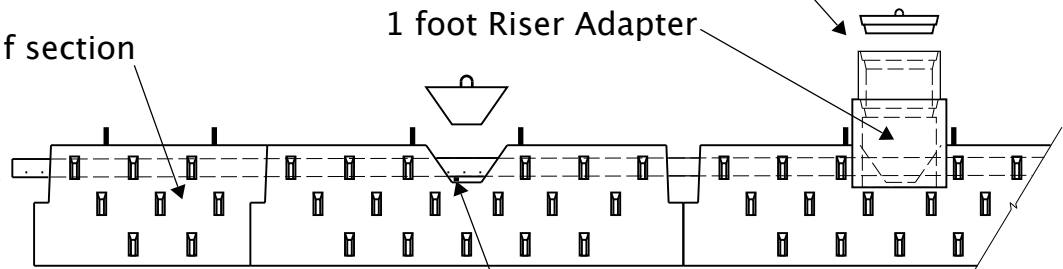
Standard 18" dia Riser and Cover

1 foot Riser Adapter

Four foot long half section

Optional 4" Perforated Pipe (not supplied, field installed)

Pipe Support Bar (included)



Richard Septic Systems, Inc.
 350 Cedar Lane, Torrington, CT 06790
 860.482.1631 800.TANX R US (826.9787)
 fax 860.482.8800 www.richardseptic.com

PRECAST CONCRETE LEACHING CHAMBERS

Tru-Vap™ TP Leaching Chambers Not to scale
 Drawing No: TP-1 9/22/2012 By: JGR